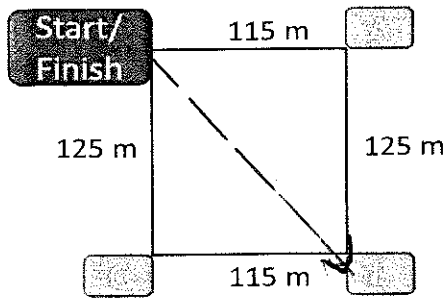


Ex: A little girl takes her dog for a walk around a city block as shown.



a) What is the distance travelled?

480 m

b) What is her final displacement?

0 m

c) What was her displacement at B?

$$15625 + 13225$$

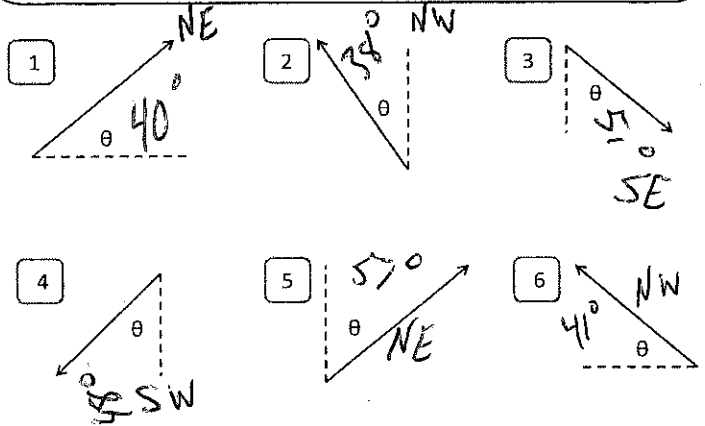
$$c^2 = 28850$$

$$c = 169.85 \text{ m SE}$$

d) What was her displacement at C?

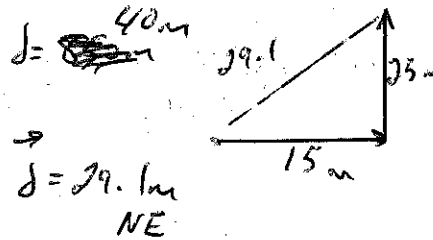
125 m

Describe the following angles



Add each of the following vectors and find the total resultant.

1) 15 m East and 25 m North



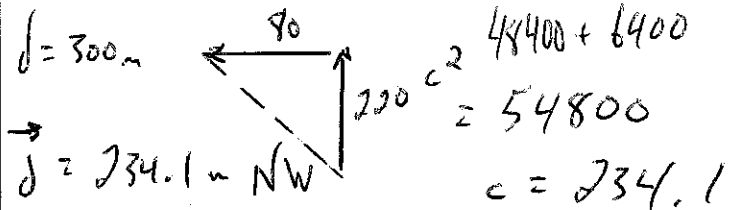
$$625 + 225$$

$$850 = c^2$$

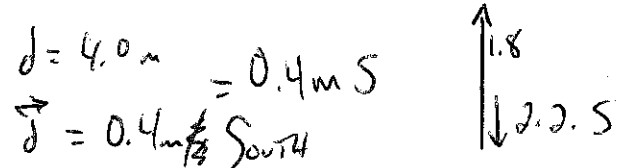
$$\sqrt{850} = c$$

$$29.1 = c$$

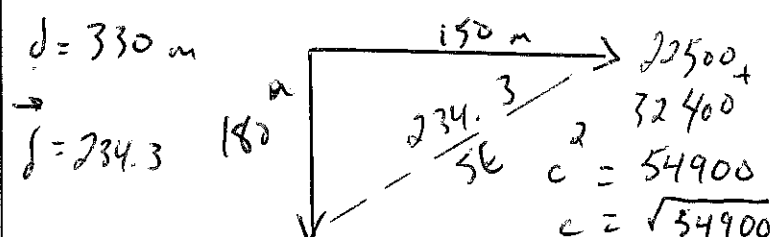
2) 220.0 m North and 80.0 m West



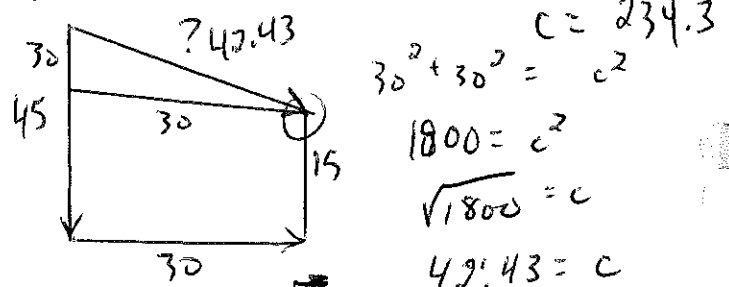
3) 2.2 m South and 1.8 m North



4) 150 m East and 180 m South



5) 45.0 m South and 30.0 m East and 15.0 m North



$d = 90 \text{ m}$ $d = 42.43 \text{ m SE}$