

Jan 4th, 6th
 10th, 12th (Review)
 Jan 16th, 18th, 20th A/B
 23rd (MONDAY) 24th 25th 26th A/B

Jan 4-12:28 PM

1. $-11 + (x) = -10 + 11$ 2. $12 = \frac{x}{15} \times 15$
 $x = +1$ $180 = v$

13. $\frac{9}{n} = \frac{3}{6}$ $\frac{54}{3} = \frac{3n}{3}$
 $\frac{3n}{3} = 9 \times 6$ $18 = n$
 $\frac{3n}{3} = \frac{54}{3}$

Jan 4-12:51 PM

15. $\frac{8}{5} = \frac{x}{3}$ $\frac{24}{5} = \frac{5x}{5}$
 16. $\frac{3}{2} = \frac{r}{3}$ $4.8 = x$
 $\frac{9}{2} = \frac{2r}{2}$ $r = 4.5$

Jan 4-1:03 PM

Trigonometry

$a^2 + b^2 = c^2$ Pythagorean Theorem

$3^2 + 4^2 = 5^2$
 $9 + 16 = 25$
 $25 = 25$

Any Triangle 90°

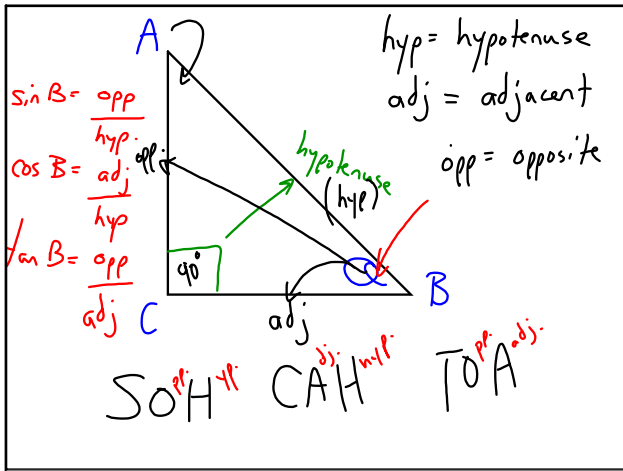
Jan 4-1:16 PM

$a^2 + b^2 = c^2$
 $3^2 + 4^2 = c^2$
 $9 + 16 = c^2$
 $25 = c^2$
 $5 = c$

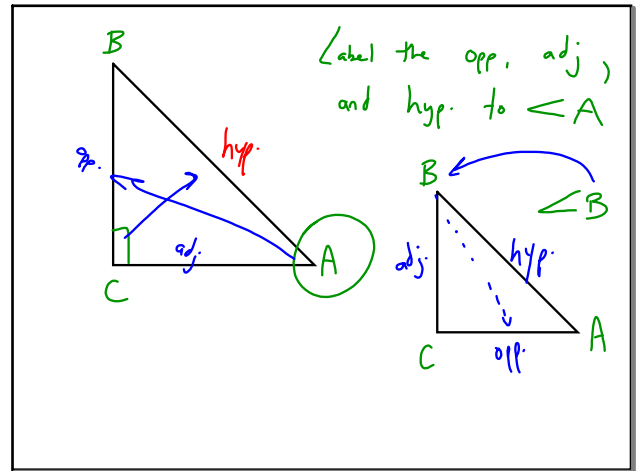
Jan 4-1:23 PM

$a^2 + b^2 = c^2$
 $6^2 + b^2 = 10^2$
 $36 + b^2 = 100$
 $b^2 = 64$
 $b = 8$

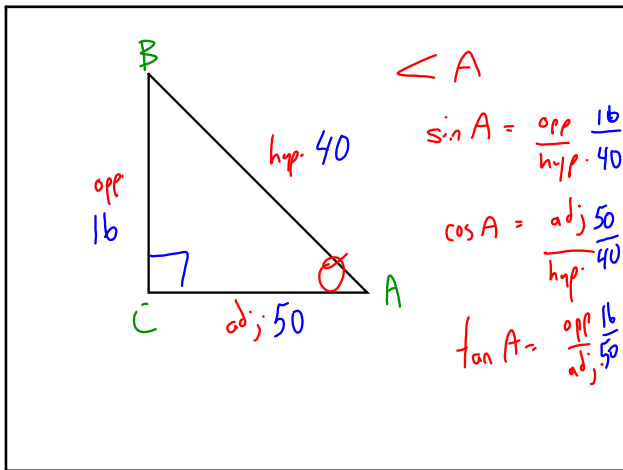
Jan 4-1:26 PM



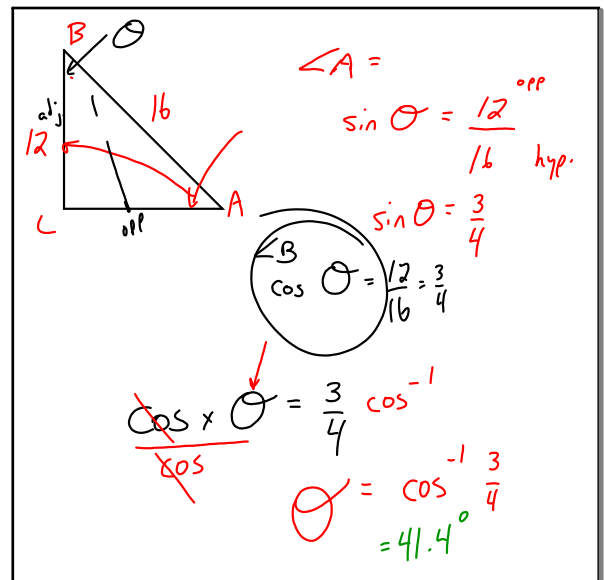
Jan 4-1:30 PM



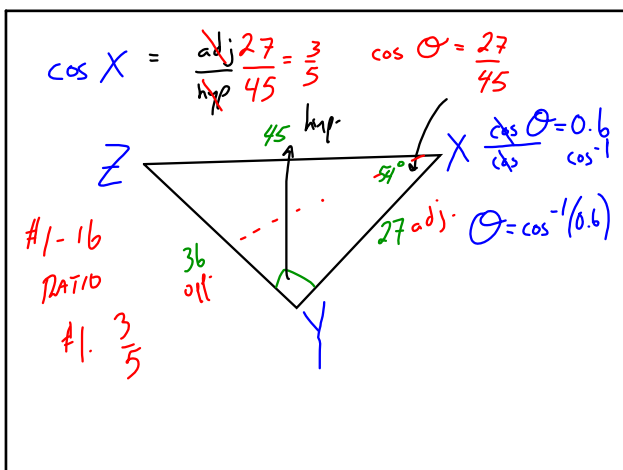
Jan 4-1:44 PM



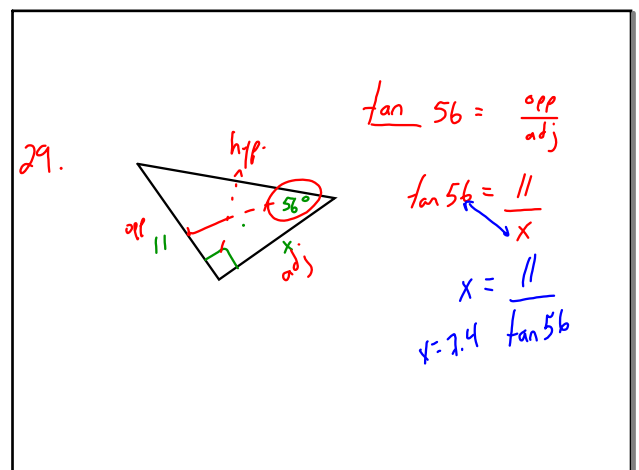
Jan 4-2:05 PM



Jan 4-2:11 PM



Jan 4-2:21 PM



Jan 4-3:03 PM